

AirWorks x Nearmap

On-demand data at your fingertips

Leverage the power of on-demand aerial imagery + the fastest feature extraction in the industry to get more projects done, faster.

With this new partnership, you can now request Nearmap's industry-leading aerial imagery and submit projects for processing, all in one place: **AirWorks**. Let our platform become the go-to place for your entire data to deliverable workflow.

WHY CHOOSE AIRWORKS + NEARMAP FOR YOUR PROJECT?

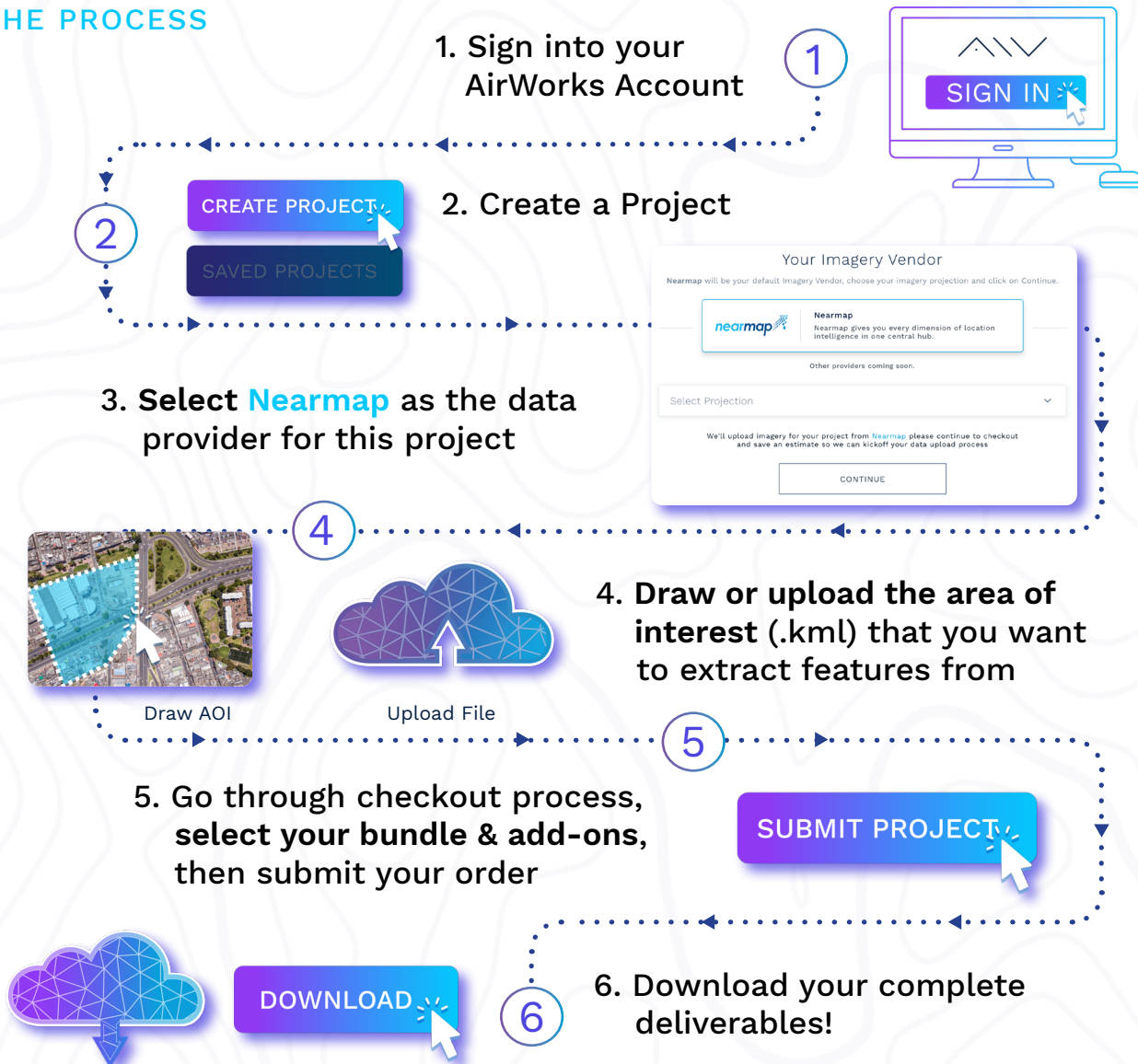


WHAT TYPES OF PROJECTS ARE A FIT?

- ▶ FEASIBILITY STUDIES
- ▶ CONCEPTUAL DESIGN AND DEVELOPMENT
- ▶ SCENARIO MODELING
- ▶ PROJECT ESTIMATION & PROPOSAL BUILDING
- ▶ SITE & LOGISTICAL PLANNING
- ▶ CONSTRUCTION DOCUMENTATION & REPORTING
- ▶ STAKEHOLDER COMMUNICATION

If you have any questions on potential uses, please reach out to our team at sales@airworks.io to get more information.

THE PROCESS



PRICING

If you have an **active AirWorks subscription**, you will be able to pay for Nearmap data requests with your existing account credits! It really is that simple. Below is a table of how many credits will be charged per kml acre of Nearmap data requested.

	EXTRA CREDITS CHARGED
Non-Nearmap Customer	0.15 credits/KML acre
Existing Nearmap Customer - 2D	0.10 credits/KML acre
Existing Nearmap Customer - 3D	FREE!



To get started with an AirWorks subscription, or to discuss the details of this partnership, please reach out to our team at sales@airworks.io

To learn more about our current Data Partners, visit www.airworks.io/partnerships

